



MATHEMATICS

EDUSS® ILS/IMTA
Mathematics
School

Installation Instructions

EdussTM Limited – ABN 37 095 551 161

Postal Address: Unit 1, 2-6 Breakwater rd, Robina, Queensland, Australia
Ph: +61 (0) 7 5569 0099 Fax: +61 (0) 7 5569 2877 e-mail: info@eduss.com

Table of Contents

Eduss Maths ILS/IMTA School Installation Options	1
Minimum Workstation Computer Requirements	2
1. Client-server installation	3
Step 1 – Installing Eduss Maths ILS/IMTA onto the server	3
Step 2 – Set up workstation to run Eduss Maths ILS/IMTA from the server	3
2. Workstation installation with data stored on network server	4
Step 1 – Installing Eduss Maths ILS/IMTA onto the first workstation	4
Step 2 – Installing Eduss Maths ILS/IMTA onto all the other workstations	5
3. Stand-alone computer installation (Computer has a network card)	6
4. Stand-alone computer installation (Computer without network card)	6
After you've installed	7
When you first log in	7
Admin Module	8
Adding a student	8
Adding a teacher	8
Adding a Class	8
Bulk Importing Users and Classes from the School Database	9
Making a backup of the database	10
Automated Module	10
Recommended for all students	10
Adding an Assessment	10
Doing an Assessment	11
Assessment Tutorial	11
Doing an Assessment Tutorial	11
Targeted Learning	11
Adding a Targeted Learning Tutorial	11
Doing a Targeted Learning Tutorial	12
Practice Exercises	12
Running Practice Exercises	12
Homework Module	12
Setting homework	12
Updating homework	13
Outcomes Module	13
Setting outcomes test/s	13
Reports Module	13
Viewing Class Assessments	13
Viewing Automated Tutorial Reports	14
Viewing Homework Reports	14
Viewing Test Reports	14
Viewing Outcomes Reports	14
Test Module	15
Setting tests	15
Updating tests	15
Troubleshooting	16

Eduss Maths ILS/IMTA School Installation Options

1. Client-server installation
2. Workstation installation with data stored on network server
3. Stand-alone computer installation (computer has network card)
4. Stand-alone computer installation (computer without network card)

Minimum Workstation Computer Requirements

- Operating systems supported: Windows 98se, ME, Windows XP, Windows 2000, NT4 with latest SP
Server operating systems: as above
- Processor: Pentium 2 300
- RAM: 32Mb
- Hard disk space: 700Mb free
- Screen resolution: 800x600 or better
- Sound card: any windows compatible

For any troubleshooting that is not covered by these instructions, please view the 'Product Support' page on <http://support.eduss.com>.

1. Client-server installation

In this installation the application is installed on a network server and is run from a workstation. This option requires a high bandwidth network and a high-capacity server.

Step 1 – Installing Eduss Maths ILS/IMTA onto the server

Note: If you plan to install the English and/or Phonics programs onto the server, it is strongly recommended installing the English and/or Phonics programs before installing the Mathematics so that there will only be one copy of the EdussAuthService running on the server.

1. Insert the Mathematics CD into the Server's CD-Rom drive
2. When the autorun menu appears, click on 'Install Eduss Mathematics'. If the autorun menu does not appear, open My Computer, browse the Mathematics CD and run Setup.exe.
3. Follow the on-screen prompts to complete the installation
4. Once the installation is complete, share the EdussMathsILS folder, (C:\Program Files\EdussMathsILS by default), so that any workstation connecting to that folder will have full access
5. **If you have already installed the English and/or Phonics on the server:**
 - a. Open C:\Program Files\Eduss\Database\Databases and double click on 'EdussAuthControl'
 - b. Type in the License Key under 'Install New License' and click on 'Add Licenses'. The License Key can be found on Maths CD.
 - c. Under 'Service Management' click on 'Install'
 - d. Under 'Control' click on 'Start'
 - e. This completes the install on the server
6. **If you have not installed the English and/or Phonics on the server:**
 - a. Open the 'Tools' folder found on the Eduss Mathematics CD
 - b. Open the 'Eduss Auth Control and Service' folder
 - c. Copy the 'EdussAuthControl', 'EdussAuthService' and 'Prefs.vdb' files from the CD to a folder on the server (it's recommended to put it into the EdussMathsILS folder so it is easy to find)
 - d. Once the files have been copied, run the 'EdussAuthControl'
 - e. Type in the License Key under 'Install New License' and click on 'Add Licenses'. The License Key can be found on the Maths CD.
 - f. Under 'Service Management' click on 'Install'
 - g. Under 'Control' click on 'Start'
 - h. This completes the install on the server

Step 2 – Set up workstation to run Eduss Maths ILS/IMTA from the server.

1. On a workstation, insert the Eduss Mathematics CD
2. Browse to the Tools folder
3. **On a Windows XP workstation:**
 - a. Run XP ILS Workstation Setup
 - b. Follow the on-screen prompts
4. **On any other Windows workstation:**
 - a. Run ILS Workstation Setup
 - b. Follow the on-screen prompts

Tip: You can copy either the XP ILS Workstation Setup.exe or the ILS Workstation Setup.exe to the shared folder on the server, and run that from the shared location on the workstations, rather than inserting the CD into every workstation.

5. For all workstations:
 - a. Create a shortcut on the desktop to 'EdussMathsILS.exe' where it was installed on the server.
 - b. Once you have created the shortcut, run the Maths program from the shortcut.
 - c. When prompted for an Admin password, type in your confidential password. Please ensure that you do not forget this, as that would prevent some admin tasks from being done.
 - d. After setting the password the program exits. Please run 'Eduss Maths ILS' again.
 - e. When you are prompted for the IP address for the 'Eduss Authentication Server', enter the IP address of your server. (If you do not know the IP of your server, you can open the Eduss Auth control and you will see the IP address at the bottom of the window. You only need to type the number that appears and a port number that follows, for example 192.168.1.0:9956. The port number will always be 9956.)
 - f. Click on 'Ok'.
 - i. If a message comes up saying 'The IP address you have given or the Authentication server is not running on that computer':
 1. Click on 'Ok'.
 2. Click on 'Cancel'
 3. Try running the Maths program again and re-entering the IP address, also open EdussAuthControl.exe on the server and make sure the service has been installed and has been started.

2. Workstation installation with data stored on network server

Step 1 – Installing Eduss Maths ILS/IMTA onto the first workstation

1. Run the installation from the CD-ROM.
2. Follow the installation prompts.
3. When the installation is complete, the product has to be unlocked. To do this, insert the Eduss Maths CD and follow the steps a to l below on the network server:
 - a. Create a folder in a location where students, teachers and administrators have full read/write access, called 'Eduss'
 - b. Browse the CD using Windows Explorer
 - c. Open the 'Tools' folder
 - d. Open the 'Eduss Auth Control and Service' folder
 - e. Copy 'EdussAuthControl.exe', 'EdussAuthService.exe' and 'Prefs.vdb' and paste it into the 'Eduss' folder on the server.
 - i. Run the 'EdussAuthControl.exe' from the 'Eduss' folder on the server.
 - j. Type in the License Key under 'Install New License' and click on 'Add Licenses'. The License Key can be found on the Maths CD.
 - k. Under 'Service Management' click on 'Install'
 - l. Under 'Service Management' click on 'Start'
4. Next, the database path has to be set from the workstation:
 - a. Run the Eduss Mathematics program.

Eduss Maths ILS/IMTA School Installation Instructions

- b. When prompted for an Admin password, type in your confidential password. Please ensure that you do not forget this, as this will prevent admin tasks from being done.
 - c. After setting the password the program exits. Please run the Eduss Maths ILS again.
 - d. When you are prompted for the IP address for the 'Eduss Authentication Server', enter the IP address of your server. (If you do not know the IP of your server, you can open the Eduss Auth control and you will see the IP address at the bottom of the window. You only need to type the number that appears and a port number that follows, for example 192.168.1.0:9956. The port number will always be 9956.)
 - e. Click on 'Ok'.
 - i. If a message comes up saying 'The IP address you have given or the Authentication server is not running on that computer':
 1. Click on 'Ok'.
 2. Click on 'Cancel'
 3. Try running the Maths program again and re-entering the IP address, also open EdussAuthControl.exe on the server and make sure the service has been installed and has been started.

(Tip: If this works, it will show the login screen. If it does show the login screen, you can copy the config.xml file found in the Maths installation folder, "C:\Program Files\EdussMathsILS\" by default, and put it in a shared location on your server. Once you have done this you can copy this file into the Maths installation folder on the remaining workstations, and you will not be prompted for the IP next time you run the program, as it will already know where to look.)
 - f. Login as Administrator. Choose Admin from the top menu and select Admin Module.
 - g. Click on the System Maintenance tab.
 - h. Create a Backup. To do this:
 - i. Click Browse and set the path using Network Places (Windows XP, Windows 2000, Windows ME) or Network Neighbourhood (Windows 98). For example '\\servername\eduss\eduss.mdb'. It is not recommended to use mapped network drives.
 - i. Click Backup.
 - j. Now set Database Path to the backup that has just been created:
 - i. Click Browse next to 'Database Path' and browse to the backup using Network Places (Windows XP, Windows 2000, Windows ME) or Network Neighbourhood (Windows 98). For example '\\servername\eduss\eduss.mdb'. It is not recommended to use mapped network drives.
5. That completes the first workstation installation onto the server.

Step 2 – Installing Eduss Maths ILS/IMTA onto all the other workstations.

The following steps should be followed on each workstation.

1. Run the installation from the CD-ROM.
2. Follow the installation prompts.
3. Now set up the database path.
 - a. Run the Eduss Mathematics program.
 - b. When prompted for an Admin password, type in your confidential password. Please ensure that you do not forget this, as this may prevent any admin tasks from being done.
 - c. After setting the password the program exits. Please run the Eduss Mathematics program again.

- d. When you are prompted for the IP address for the 'Eduss Authentication Server', enter the IP address of your server. (If you do not know the IP of your server, you can open the Eduss Auth control and you will see the IP address at the bottom of the window. You only need to type the number that appears and a port number that follows, for example 192.168.1.0:9956. The port number will always be 9956.)
 - e. When the login screen appears, login as Administrator. Choose Admin from the top menu and select Admin Module.
 - f. Click on the System Maintenance tab.
 - g. To set the Database Path to the database on the server, click Browse and browse to the Eduss Mathematics database on your server using Network Places (Windows XP, Windows 2000, Windows ME) or Network Neighbourhood (Windows 98). For example '\\servername\eduss\eduss.mdb'. It is not recommended to use mapped network drives.
4. That completes the installation, please see 'After you've installed'.

3. Stand-alone computer installation (Computer has a network card)

1. Run the installation from the CD-ROM.
2. Follow the installation prompts.
3. When the installation is complete, the product has to be unlocked. To do this, insert the Eduss Maths CD and follow the steps below:
 - a. Browse the CD using Windows Explorer
 - b. Open the 'Tools' folder
 - c. Open the 'Eduss Auth Control and Service' folder
 - d. Copy 'EdussAuthControl.exe', 'EdussAuthService.exe' and 'Prefs.vdb' and paste it into the Eduss Mathematics installation folder on the workstation. (C:\Program Files\EdussMathsILS by default)
 - m. Run the 'EdussAuthControl.exe' from the Eduss Mathematics installation folder.
 - n. Type in the License Key under 'Install New License' and click on 'Add Licenses'. The License Key can be found on the Maths CD.
 - o. Under 'Service Management' click on 'Install'
 - p. Under 'Service Management' click on 'Start'
4. That completes the installation, please see 'After you've installed'.

4. Stand-alone computer installation (Computer without network card)

Please contact us for instructions on installing the program onto a computer without a network card.

Eduss Maths ILS/IMTA v3.2.8 or later

Instructions

After you've installed

When you first log in

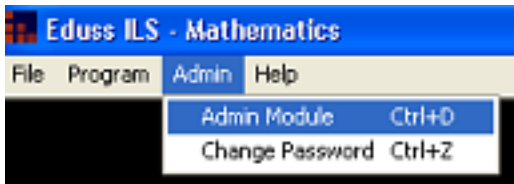
- The first thing you will have to do once you've installed the software is choose an administration password.



- Click on 'Submit' and the program will close.
- Open the program again.
- Enter the Username 'admin' and type in the password you have just entered. Remember that the default system admin's username is, 'admin'.



- When the main menu appears access the 'Admin Module' via the top Menu.



Admin Module

Last Name	First Name	Username
ADAMS	Ayla Elaine	ADAM0022
BAXTER	Tara Patricia	BAXT0022
BEAZLEY	Sam Robert	BEAZ0011
BENNETT	Georgina Ruth	BENN0025
bob2	bob2	bob2
Cusens	Lorraine	c
Hill	Martin	mhill
Jones	Roy1	roy1
Jones	Roy2	roy2
Long	James	jlong
Marlov	Bob	bob

Adding a student

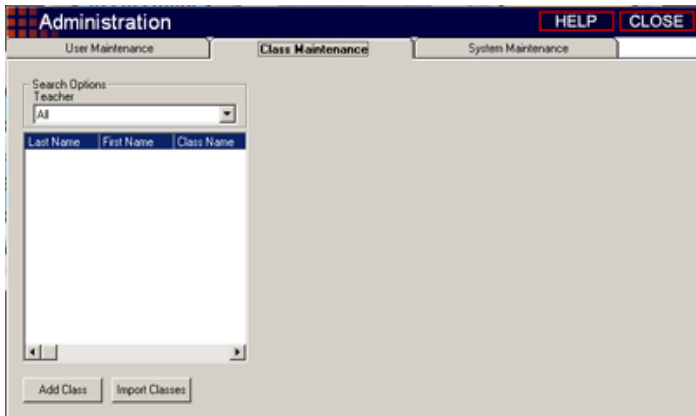
- Login as admin or teacher
- Open 'Admin Module' from the main menu (top left corner)
- Click on 'User Maintenance'
- Click 'Add User' button
- Enter all details on the form
- Choose student's grade
- Select 'Student' from user type
- Click 'Submit' button

Adding a teacher

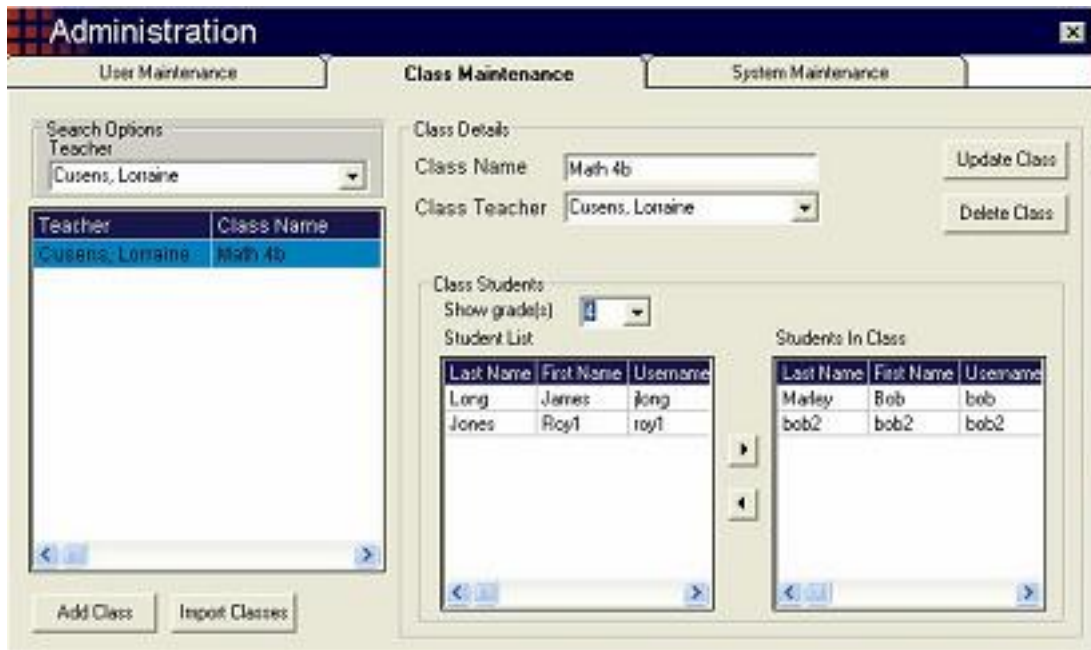
- Login as admin
- Open 'Admin Module' from the main menu (top left corner)
- Click on 'User Maintenance'
- Click 'Add User' button
- Enter all details on the form
- Select 'Teacher' from user type
- Click Submit button

Adding a Class

- Login as admin or teacher
- Open 'Admin Module' from the main menu (top left corner)
- Click on 'Class Maintenance'



- Click 'Add Class' button
- Enter a class name
- Choose 'Teacher'
- Click 'Submit' button
- Now you can choose the students to add to your class



- Students can be added by double clicking on their name
- Students can also be added using the arrow buttons
- You can add several students simultaneously by selecting them and using the arrow button

Bulk Importing Users and Classes from the School Database

- Insert the Eduss Mathematics CD
- Using 'Explorer', on the CD open the Tools : Data Import Template folder
- Copy the Class Import and User Import templates onto your hard drive
- Ensure that the template properties are not set to 'read only'
- Open the templates

- Export the User and Class data from the school database and copy it into the Excel spreadsheet templates. Save all changes.
- For additional information view the comments in the spreadsheets by moving the cursor over the column headings
- Login as 'administrator'
- In the 'User Maintenance' section of the 'Admin Module', click on the 'Import Users' button and follow the prompts
- In the 'Class Maintenance' section of the 'Admin Module', click on the 'Import Classes' button and follow the prompts

Making a backup of the database

- Making regular backups is very important
- Login as 'administrator'
- In the 'System Maintenance' section of the 'Admin Module', click on the 'Browse' button in the 'Create a Backup' section, to select where to save the backup database
- Click on the 'Backup' button

Automated Module

Recommended for all students

- Automatically determines where students missed crucial concepts.
- Intelligently selects assessment exercises to identify problem areas.
- The smart Assessment Tutorial will fix learning gaps.

Adding an Assessment

- Login as a 'teacher'.
- Click on 'Automated Module' on the main menu
- Click on the 'Add Assessment' button
- Select the exercises you wish to assess
- Select a class (Ensure that the student/s you wish to assess is in this class)
- Select a Year Level (for example, choose 1 if you wish to assess the student/s on Year 1 exercises)
- Enter an assessment title
- Set the number of questions per exercise
- Set the pass rate
- Click 'Test Beyond Level' if you want a student/s to be tested beyond their level
- Click Submit button

For further information on using the Assessment Module, go to the Assessment Module section in the 'How Eduss Works' part in the program.

Doing an Assessment

- Login as a 'student'
- Click on 'Automated Module' on the main menu
- Select the assessment you wish to do
- Click on the 'Next Exercise' button
- Follow the prompts until the assessment has been completed

For further information on using the Automated Module, go to the Automated Module section in the 'How Eduss Works' part in the program.

Assessment Tutorial

- The Eduss Maths system automatically adds a tutorial based on the student's needs when an assessment is complete.
- The smart Assessment Tutorial will automatically select appropriate exercises to fix learning gaps.
- The tutor will persist with exercises until the student has mastered the topic.

Doing an Assessment Tutorial

- When students do an Assessment and the system identifies gaps in students' knowledge an Assessment Tutorial is created automatically. Students can then work through this to enable them to acquire the missing skills. The system will persist until they have reached the appropriate level.
- Login as a 'student'
- Click on 'Automated Module' from the main menu.
- Select the Assessment Tutorial from the Assessment Tutorial list
- Click on the 'Next Exercise' button.

For further information on using the Assessment Tutor, go to the Assessment Tutor section in the 'How Eduss Works' part in the program.

Targeted Learning

- The Targeted Learning Tutor enables a student to assess themselves on particular topics between specified year levels.

Adding a Targeted Learning Tutorial

- Login as a 'student'
- Click on 'Targeted Learning' on the main menu.
- Click on 'Add Tutorial'
- Enter a tutorial title
- Set the number of questions per exercise
- Set the pass rate

- Define the target range (for example if you wish to set a tutorial for a year 1 student that assesses them on exercises from year 1 to year 4, then put the number 1 into the first box then number 4 into the second.)
- Select the subjects you wish to complete for the tutorial
- Click on 'Submit'

Doing a Targeted Learning Tutorial

- Login as a 'student'
- Click on 'Targeted Learning' on the main menu.
- Select the tutorial from the 'Targeted Learning Tutorial List'
- Click on the 'Next Exercise' button
- Follow the prompts until the tutorial has been completed

For further information on using the Targeted Learning Module, go to the Targeted Learning Module section in the 'How Eduss Works' part in the program.

Practice Exercises

Running Practice Exercises

- Log on as a teacher, student or admin
- Click on 'Practice Exercises' on the main menu
- Set the number of questions per exercise (10 by default)
- Select the topic and subtopic of the exercise subject
- Select the appropriate exercise to run

For further information on using the Practice Exercises, go to the Practice Exercises section in the 'How Eduss Works' part in the program.

Homework Module

Setting homework

- Login as a teacher
- Click on 'Homework Module' on the main menu
- Click on the 'Set Homework' tab
- Click on 'Set Homework' button
- Enter the homework title
- Select the class
- Set the due date by clicking on the Calendar icon
- Set the number of questions per exercise (10 by default)
- Click on 'Add Exercises'
- Wait a moment for a new selection screen to appear
- Select the exercises you wish to set for homework
- Click on 'Submit Homework Details' button

For further information on using the Homework Module, go to the Homework Module section in the 'How Eduss Works' part in the program.

Updating homework

- Login as a teacher
- Click on 'Homework Module' on the main menu
- Click on the 'Set Homework' tab
- Select the homework you wish to update
- Add/edit exercises or edit the homework details
- Click on 'Update Homework' button

Outcomes Module

Setting outcomes test/s

- Login as a teacher
- Click on 'Outcomes Module' from the main menu
- Click on 'Add Outcomes Test'
- Select the State you wish to do outcomes for
- Select the exercises you wish to set for the test
- Select a class
- Select a level
- Enter an Outcomes title
- Set the number of questions per exercise (10 by default)
- Set the pass rate (60% by default)
- Check Test Beyond Level if you want a student to be tested beyond their level
- Click on Submit button.

For further information on using the Outcomes Module, go to the Outcomes Module section in the 'How Eduss Works' part in the program.

Reports Module

Viewing Class Assessments

- Login as a teacher
- Click on 'Reports' on the main menu
- Click on Class Reports
- Complete steps 1 & 2
- If you want to see a summary of the class assessments
 - Select summary report in step 3 (under class assessments)
 - Select the assessment from the list on the right

- If you want to see individual student's detailed reports
 - Select individual student detailed reports in step 3 (under class assessments)
 - Select either all, or one student
 - Select the assessment

For further information on using the Reports Module, go to the Reports Module section in the 'How Eduss Works' part in the program.

Viewing Automated Tutorial Reports

- Login as a teacher
- Click on 'Reports' on the main menu
- Click on Class Reports
- Step 1 – Select a teacher from the list
- Step 2 – Select a class from the list
- If you want to see all student's detailed reports
 - Select all students detailed report (under Automated Tutorials)
 - Select the tutorial from the list on the right
- If you want to see an individual student detailed report
 - Select individual student detailed report (under Automated Tutorials)
 - Select the student from the list on the right
 - Select the tutorial from the list on the right

Viewing Homework Reports

- Login as a teacher
- Click on 'Reports' on the main menu
- Click on Class Reports
- Step 1 – Select a teacher from the list
- Step 2 – Select a class from the list
- Select summary report (under homework)
- Select the homework from the list on the right

Viewing Test Reports

- Login as a teacher
- Click on 'Reports' on the main menu
- Click on Class Reports
- Step 1 – Select a teacher from the list
- Step 2 – Select a class from the list
- Select summary report (under test)
- Select the test from the list on the right

Viewing Outcomes Reports

- Login as a teacher
- Click on 'Reports' on the main menu

- Click on outcomes reports
- Step 1 – Select a teacher from the list
- Step 2 – Select a class from the list
- Define the outcomes ranges
- Select the outcomes from the list on the right

Test Module

Setting tests

- Login as a teacher
- Click on 'Testing' on the main menu
- Click on 'Set Test'
- Enter test title
- Select class
- Set the due date by clicking on the calendar icon
- Set the number of questions
- Click on Add Exercises
- Wait a moment for a new selection screen to appear
- Select the exercises you wish to set for the test
- Click Submit Test Details button

For further information on using the Test Module, go to the Test Module section in the 'How Eduss Works' part in the program.

Updating tests

- Login as a teacher
- Click on 'Testing' on the main menu
- Click on the 'Set Test' tab
- Select the test you want to update
- Click on the 'Add/edit Exercises' button or edit the test details if needed
- Click on Update Test

Troubleshooting

When I run the Mathematics program on a client, it asks me for an IP Address. I have entered the correct IP Address but it keeps asking me for this. How do I solve this problem?

To solve this problem, please check the following:

1. Make sure you have entered your License Key into the EdussAuthControl either your server or workstation, and that under **License Management**, it shows the correct number of licenses for the Mathematics program that your school received.
2. Check that the Eduss Auth Service is running on the computer that has the IP Address you are entering in the Mathematics program by opening the EdussAuthControl. If the word's **Install** and **Start** are highlighted, then it has not been installed or started. Please click on **Install** and then **Start**. Once this is done, please try running the program on a workstation again
3. If none of the above fix the problem, please visit <http://support.eduss.com> for our knowledge base

The program is asking me to enter my Admin password. I do not remember putting one in, what is my password?

The program asks you to enter an Admin password the first time you run the program. The password that you typed when you first started the program should be your admin password. If you can't remember this password:

1. It is possible that you are using an old database from a previous install of the Mathematics. If you had a previous install of the Mathematics program, please try using the Admin password you used when running the previous version
2. If someone else installed the program, they may know what the password is, as they may have entered it after installation
3. If you still cannot remember the admin password, and no work has been done on the program by any students or teachers, you can overwrite the database. To do this:
 - a. Ensure that the Mathematics program is closed
 - b. Insert the Eduss Mathematics CD in your server's CD-Rom drive
 - c. When the auto run menu appears, close it
 - d. Explore the CD
 - e. Open the Program Files folder
 - f. Open the Eduss Maths ILS folder
 - g. Open the db folder
 - h. Copy eduss.mdb
 - i. Open the Eduss Maths folder that resides on your server
 - j. Open the db folder

- k. Paste eduss.mdb into that folder, overwriting the existing file.
WARNING: Doing this will overwrite any previous data that has been recorded. Only do this if you are certain there is no data that you wish to keep.

I cannot locate my Network Neighborhood in the install path part of the installation, how do I install the program?

This is due to a fault in the Install Shield application we have used to develop the installer. Please map the drive before attempting to do the install. Then you will be able to browse to that drive and install into your desired folder. It is recommended you un-map the drive when you are finished the install.

Does the program have a client install?

Please refer to the manual for the type of install you are doing. The Client/Server requires a small workstation setup to be run, while the Workstation installation type requires a full install of the program on each workstation.

After the install I run the program and receive an error message about read/write settings, but they are all valid for all users.

Please email your settings.mdb file to support@eduss.com.au, as this may be due to running the program over the network via a path that not every machine can access. The settings file is located in the program directory.

Do I need the disc in the server to run it?

No, the School version does not require a disc

Is it possible to set up one workstation with Eduss and ghost it across?

Yes it is possible. After following the installation instructions and you have successfully installed the Mathematics program onto the first workstation, you are able to ghost the image across to the rest of the workstations.

Does Eduss support Novell?

We have had cases in the past where getting the program to run in the Novell environment was successful. Please contact Eduss Technical Support for information regarding this type of install.

Where can I find the updates that the manual mentions?

Please go to www.eduss.com.au and follow the 'Product Support' links

The program is asking me to unlock it with a floppy disc

This will only happen if you had a previous install of Eduss on that system. Please uninstall all copies of the Eduss program and reinstall to solve this problem.

I have updated, but all the old users are still there

Please make sure you have removed all previous evidence of Eduss from the system before installing the newer version. If you didn't do this before installing, please un-install the program and do so, then re-install.